



# NICOMAC COATING SYSTEM

## INTRODUCTION

# A CHOICE OF QUALITY

Passion, qualified expertise and professional staff have led Nicomac Europe to complete over 1500 successful installations in 60 countries worldwide. Along its 40 years of activities, Nicomac Europe has served among the most innovative companies in the pharmaceutical, electronics, nutraceutical and food business industries, of all sizes.

**4.500<sub>m²</sub>**  
of production site

**1.800+**  
successfull projects

**65**  
Countries served

**40+**  
years of experience



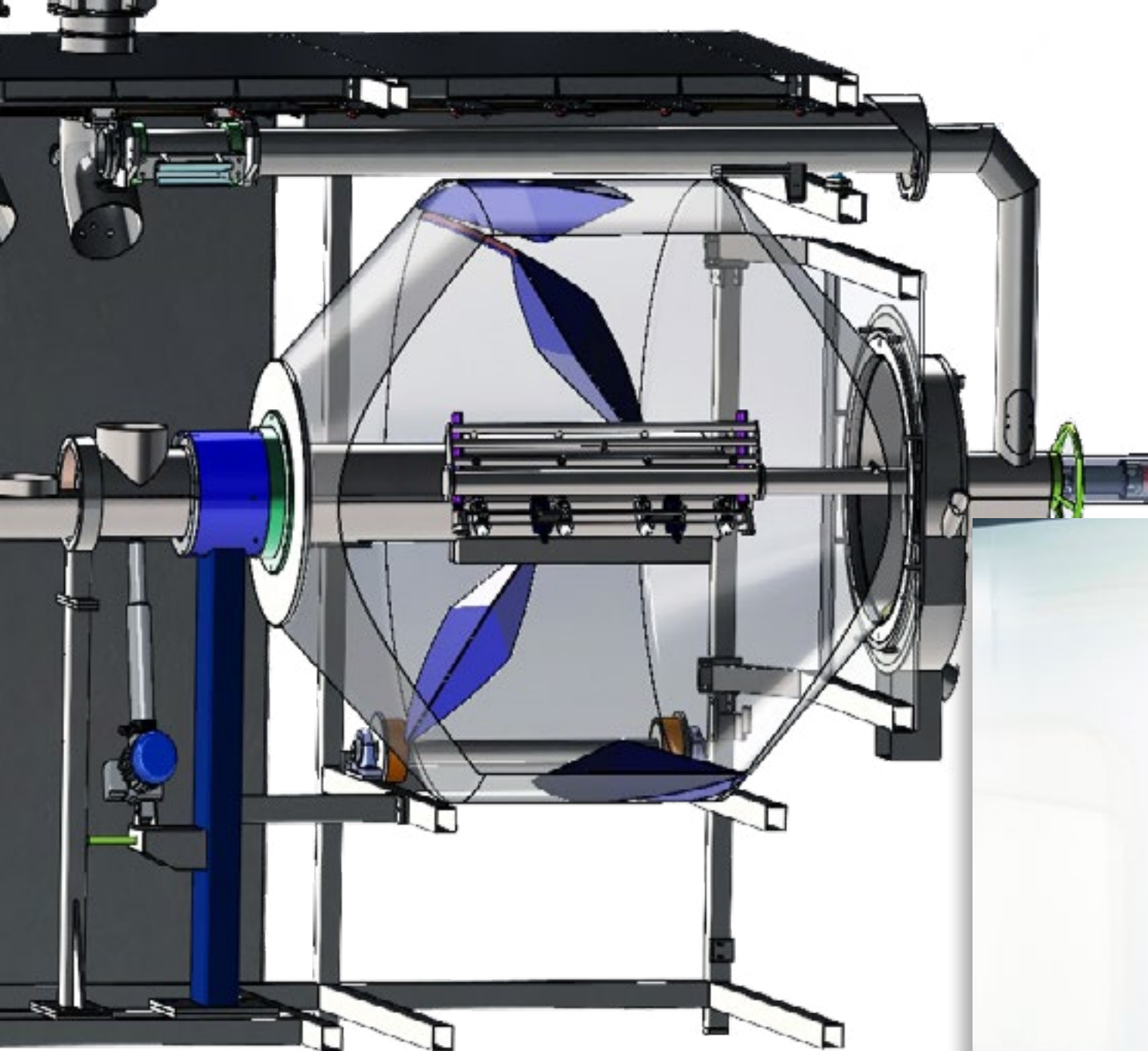
## INTRODUCTION

# DEVOTED TO THE BEST

We never settle. We always aim for innovation, strength and safety. Our detailed attention through BIM design ensures the highest precision and dynamism.

The purpose of the coating process is to protect the active substance from external air, avoiding a rapid degradation, protecting from bad taste during the ingestion and give to the tablet a pleasing appearance, making fundamental the uniform spread of the coating solution on the surface of all the tablets.

With these goals in mind, us from Nicomac Europe, on the coating market since 1977, have developed NCS Superior, the most efficient, modern and advanced coating machine the market has to offer.





## FEATURES

# STATE OF THE ART COATING PROCESS

NCS Superior systems are produced in the PSC (Perforated Super Coater) and SWC (Solid Wall Coater) variants. Each one is designed and built to meet specific coating needs, but both share important features, such as:



### Flexibility

From 15-20% (based on core and formulation types) to 100% working capacity and unloading happens automatically by just reversing the drums' rotation.



### Solidity

The machines are built with the best materials and by design are waterproof, air-tight and explosion proof. The unique baffles offer exceptional performances.



### Technology

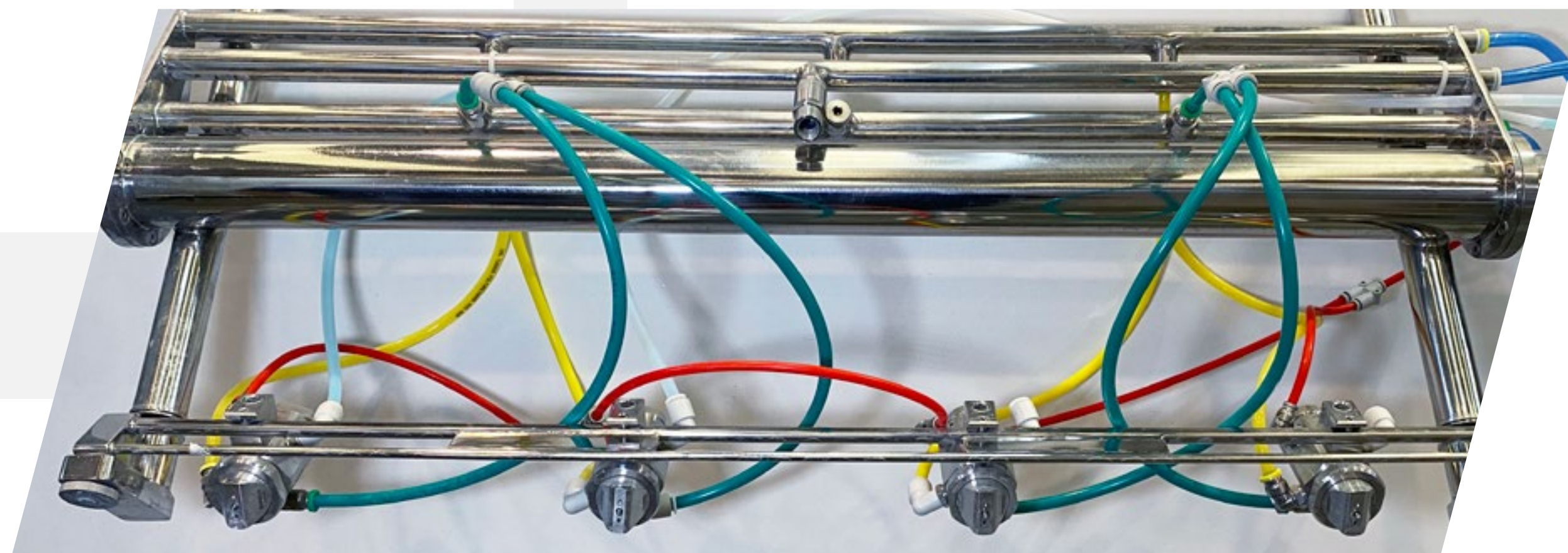
NCS systems base their technology on humidity and temperature control, with automatic and adjustable spray guns that integrate an infrared sensor.

FEATURES

## SPRAY GUNS

NCS spray guns, built in AISI 316 stainless steel and with a compact design, are placed on a sliding arm that automatically adjusts the guns' stroke close to minimum distance to the tablets in order to work up to 15-20% of the capacity with an always uniform spray pattern, avoiding clogging.

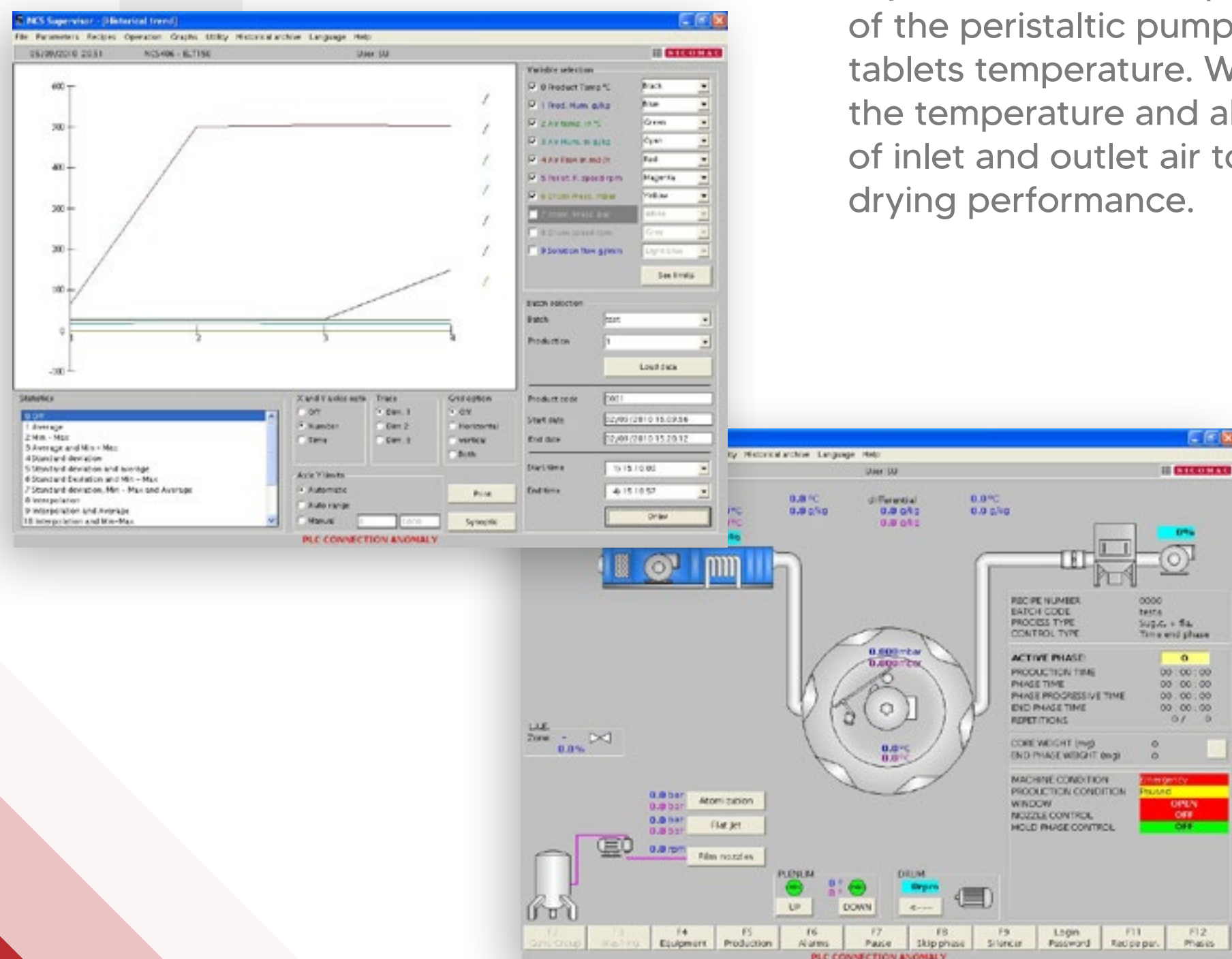
An optical pyrometer installed inside the sliding gun's arm controls tablets bed temperature.



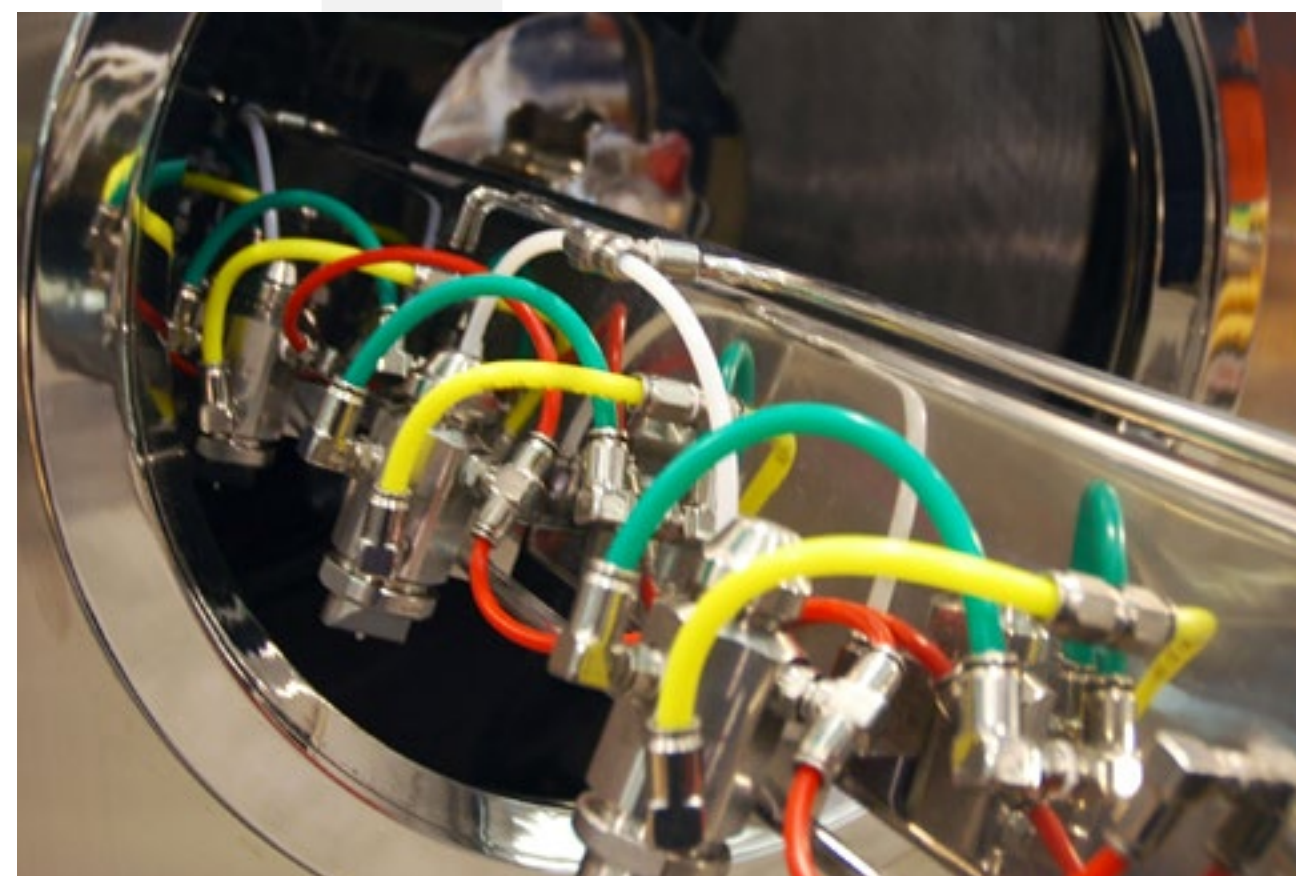
## FEATURES

# PLC-PC CONTROL SYSTEM

Nicomac Europe coating process is based on absolute humidity and temperature control. Our software adjust in a closed loop the flow rate of the peristaltic pump according the tablets temperature. We also monitor the temperature and absolute humidity of inlet and outlet air to get the best drying performance.



Spraying group



WIP-CIP system in action

MODELS

## PSC: PERFORATED SUPER COATER

The Perforated Super Coater NCS System is designed to process any type of tablet starting from 15-20% (based on core and formulation type) of maximum capacity, thanks to exclusive Nicomac Europe designed baffles that always ensure a perfect and uniform mixing.

PSC ensures, in addition, quick working times and extremely easy cleaning, thanks to the automatic Washing & Cleaning In Place system (WIP-CIP).

## MODELS

# SWC: SOLID WALL COATER

The Solid Wall Coater model features a smooth drum instead of a perforated one, supported in the mixing by the patented Blow Master® system, capable of perfectly replicate the performances of the perforated coating machine.

The batch can be composed of various types of products (pellet, tablets, soft or hard capsules, ecc...), worked by the 3D Shark Fin® baffles, developed in 1992 and able to operate up to 20% (based on core and formulation type) of capacity.

The system is furthermore ideal for containment operations, is easy to clean and with a low utilities consunption.

SWC is the coating machine with the highest capacity on the market



Blow Master® System



MODELS

## EASY COATER

Easy Coater has the same features as the SWC equipment, but with a compact design that requires less space, ensuring quick installation times and a competitive price.

AHU and electrical/pneumatic control board are integrated in the equipment box, that also features a semi-automatic WIP system and the PLC/PC touch screen placed on a movable arm.

The PC-PLC system, placed on a movable arm



Everything is fully integrated in the machine

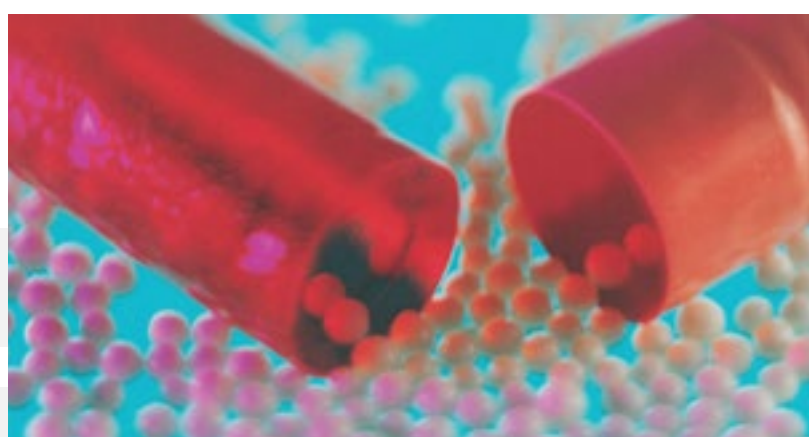




## FEATURES

# UNMATCHED COATING

Pellets, tablets, multivitamins, hard and soft capsules, difficult shaped cores: there's almost nothing that the NCS systems can't coat evenly, with the highest quality and in the quickest times.





Patented powder dosing system

Patented automatic tablet unloading system



## FEATURES

# PATENTED SYSTEMS

NCS machines come equipped with tools designed to fully aid the operator in every phase of the working process, such as the automatic tablet unloading system and powder dosing system, ensuring efficiency and maximum quality.

# contact us



Via Curiel 12 - 20050 Liscate (Milan, Italy)  
P.IVA 07434210964

*Cleanrooms, coating equipment and granulating machinery*  
***Nicomac Certified Quality***